

# 2020 VISION NATIONAL SCHOOLS AWARD



## ENTRY PACK 2010

**FIRST PRIZE:** £200 in vouchers plus £250 for the school  
**RUNNERS UP:** £100 in vouchers

*All winners and runners up will get a guided visit around the City of London*

*All entrants will receive a certificate for their Record of Achievement.*

**PRIZE GIVING WILL TAKE PLACE IN LONDON IN APRIL 2010**

### Contents:

- P.1 About The Pensions Archive Trust , Capita Hartshead and London Metropolitan Archives
- P.2 Looking to the Future / What Do You Have To Do?
- P.3 The Mission
- P.4 Judging
- P.5 Helpful Notes and Sources
- P.6/7 How to Submit Your Entry and Entry Form

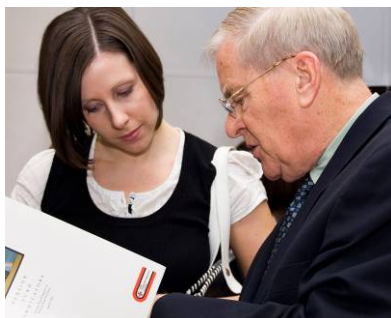
**CAPITA HARTSHEAD**



pensions archive

**LONDON  
METROPOLITAN  
ARCHIVES**

## THE PENSIONS ARCHIVE TRUST



The history of occupational pensions within the United Kingdom has been a progressive development over very many years, to the increasing advantage of retiring employees. It has been hailed by successive governments, and by many others, at home and abroad, as a remarkable success story.

But mistakes have been made too and, especially in view of the problems which have occurred to pension schemes in recent years, it is very important that the means of learning from both the successes and the shortcomings, over past years and into the present day, should be maintained for all time.

The aim of The Pensions Archive Trust is to try to ensure that as much of this material as possible is gathered together through a Pensions Archive, which concerns all matters affecting the management and development of occupational and personal pensions, in the United Kingdom of Great Britain and Northern Ireland. One of its main objectives is to advance education. Find out more at [www.pensionsarchive.org.uk](http://www.pensionsarchive.org.uk)

## CAPITA HARTSHEAD

Capita Hartshead is a leading provider of consultancy, administration and specialist delivery solutions to the life and pensions industry. Our core services are pensions administration and consulting, both actuarial and investment. In addition, we offer our clients access to expertise across a wide range of specialisations. The pensions administration team looks after over 550 clients with more than 3.4 million members.

Capita Hartshead evolved from a team set up in 1974 to administer the Local Government Pension Scheme on behalf of the water authorities. In 1997, we became part of The Capita Group Plc, one of the UK's most experienced professional support service businesses. Find out more at [www.capitahartshead.co.uk](http://www.capitahartshead.co.uk)



## LONDON METROPOLITAN ARCHIVES



London Metropolitan Archives (LMA) is the largest local authority archive in the UK, housing a thousand years of history, covering Greater London and the City. The archive provides a free public service and more information can be found at [www.lma.gov.uk](http://www.lma.gov.uk)

The Pensions Archive Trust is depositing collections at LMA, adding significant materials to the archives for anyone interested in the pensions industry, current affairs, social history and business studies.

LMA's Interpretation Team is supporting the development of History and Citizenship activities for schools which explore the history of pensions provision and current issues, the **'Futureshock'** pensions game and resources. We are also working with the **City Business Library** on this project.

For a copy of our prospectus featuring free learning opportunities at **London Metropolitan Archives** and **City Business Library**:

Email: [ask.lma@cityoflondon.gov.uk](mailto:ask.lma@cityoflondon.gov.uk)

Phone: 020 7332 3851

Write: Interpretation, LMA, 40 Northampton Road, London, EC1R 0HB

# 2020 VISION

SHARE YOUR VISION OF WHAT LIFE WILL BE LIKE IN THE YEAR 2020



## LOOKING TO THE FUTURE...

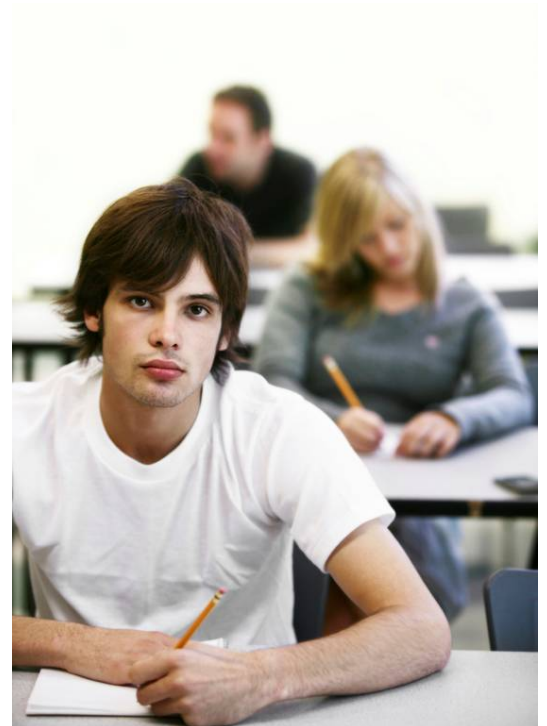
**CAN YOU DESIGN THE WAY WE WILL ALL LIVE HAPPILY EVER AFTER?**

The **2020 Vision** competition invites 16-18 year olds to present new and exciting ideas about how people can save and invest their money to enjoy a better life when they retire.

## WHAT DO YOU HAVE TO DO?

Based on the scenario provided:

- Research current issues around pension provision and the importance of the pensions industry in the UK
- Present your findings and ideas about how you think this will affect people in 2020 and beyond
- Produce a brief for an advertising company to create a campaign encouraging people in 2020 to think about and invest in their long term future



**YOU CAN ENTER AS AN INDIVIDUAL OR AS A GROUP (MAXIMUM SIZE 4)  
ENTRIES ARE TO BE SUBMITTED THROUGH YOUR SCHOOL OR COLLEGE**

# 2020 VISION - THE MISSION



**You work for a financial services company and the year is 2020**

Your team wants to promote a new retirement savings product in the UK. You are meeting the representatives of the advertising agency who have won the contract to run the campaign.

## **THE TASK:**

- **Based on your research show the most important investment and social challenges you foresee facing the UK in the year 2020**
- **Demonstrate how your product will successfully address some of those challenges**
- **Provide a brief for the advertising company indicating the specific target audience you have identified and why you have chosen them**

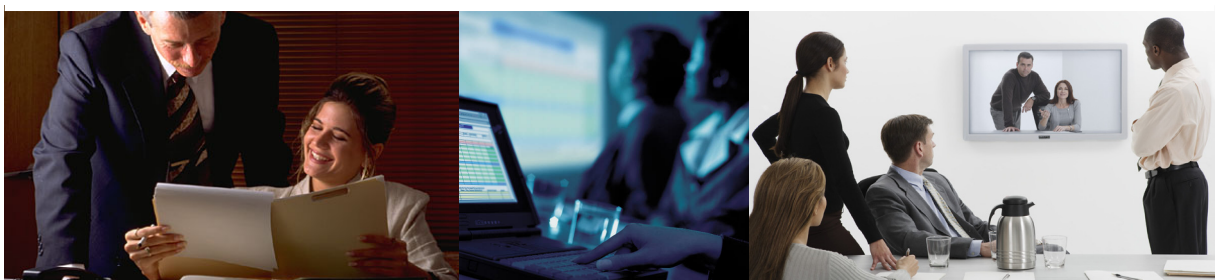
---

## **PRESENTING YOUR WORK**

Entries can be presented as one of the following:

- A) Written report (number of words 1500 - 2000). Illustrations such as graphs should be included**
- B) Slide material with notes (maximum number of images 15 - word count for notes 1000 - 1500)**
- C) Audio Visual report recorded to DVD with accompanying notes (running time maximum 10 minutes - word count for notes 800 - 1000)**

**NB.** A list of significant sources should be attached to the final entry. This list is NOT included in your final word count



# JUDGING

The judging panel will include representatives of The Pensions Archive Trust, Capita Hartshead and London Metropolitan Archives.

The judges' decision is final.



## THE JUDGES WILL LOOK FOR EVIDENCE OF SOME UNDERSTANDING OF:

- Economic, social and demographic factors in the UK
- Public behaviour and attitudes towards pensions
- The potential retirement savings situation in 2020 and beyond
- The importance of pension provision in the UK
- The differences between State benefits and other forms of pension provision
- The role of employers
- Issues affecting your target group and their future needs

## CREDIT WILL BE GIVEN FOR:

- Thorough and accurate research
- Thoughtful and imaginative use of current information to project future situations
- Clear, effective and engaging communication



## HELPFUL NOTES

When bringing together your ideas you might find it useful to consider the following points:

- In 2000, the percentage of people by age who had given little or no thought to retirement income was 16-19 - 80%; 20-24 - 55% and 25-29 - 35%
- In 2006, there were 4.7 million people in the UK aged 75 and over. The number is projected to increase to 5.5 million by 2016 and to 8.2 million by 2031, a rise of 76 % over twenty-five years
- In 2008 the average life expectancy of people in the UK was **77 years**
- In 2008 **84%** of people survived long enough to draw a pension
- In 2008 those who had lived long enough to get a pension, were likely to enjoy an average of **twenty four** years of retirement
- **One in 4 babies** alive in 2008 is expected to live for 100 years
- There were **4 working tax payers** for every pensioner in 2008; there will be **2 to each pensioner** by 2050

### YOU MIGHT ALSO WANT TO ASK YOURSELF THESE QUESTIONS:

- Based on current information how might life have changed by 2020?
- Will we feel the need to work for much longer than our parents did and will there be enough jobs?
- How will ideas about retirement have changed?
- Will there be a set retirement age?
- What sort of things will people be investing in?
- What would make you decide to save your money? What would stop you?

### SOME INFORMATION SOURCES:

#### Websites

The Pensions Archive Trust

[www.pensionsarchive.org.uk](http://www.pensionsarchive.org.uk)

\* See Mike Young's essay, 'Savings, Investments and Pensions: Some Thoughts'

Department for Work and Pensions

[www.dwp.gov.uk](http://www.dwp.gov.uk)

\* See Research Report 438, 'Live now, save later? Young people, savings and pensions'

The Pensions Advisory Service

[www.pensionsadvisoryservice.org.uk](http://www.pensionsadvisoryservice.org.uk)

Government Actuary's Department

[www.gad.gov.uk](http://www.gad.gov.uk)

Professional Pensions Magazine

[www.professionalpensions.com](http://www.professionalpensions.com)

Office for National Statistics

[www.statistics.gov.uk](http://www.statistics.gov.uk)

#### Libraries

Make full use of your school, college and local reference library for up to date material.

#### Media

Moneybox (BBC Radio 4)

<http://news.bbc.co.uk/2/hi/programmes/moneybox/default.stm>

The Money Programme (BBC2)

<http://news.bbc.co.uk/1/hi/business/3787311.stm>

BBC News - Your Pensions

[http://news.bbc.co.uk/1/hi/in\\_depth/business/2002/pensions\\_crisis/default.stm](http://news.bbc.co.uk/1/hi/in_depth/business/2002/pensions_crisis/default.stm)

# **YOUR ENTRY SUPPORT**

If you have any further questions please send them, including a contact phone number, to:

**[pensionsarchive@googlemail.com](mailto:pensionsarchive@googlemail.com)**

## **1. Checklist**

Make sure

- The word count, image count and film length are within the rules
- Entries are clearly labelled with the name of the school, a contact name, address, email and phone number
- You have completed and included the entry form overleaf
- A list of significant sources is attached to the final entry. This list is NOT included in your final word count

## **2. Entries can be sent by post to:**

**2020 Vision Competition  
C/O Interpretation  
London Metropolitan Archives  
40, Northampton Road  
London  
EC1R 0HB**

or by email to:

**[pensionsarchive@googlemail.com](mailto:pensionsarchive@googlemail.com)**

**TO ARRIVE NO LATER THAN NOON  
ON 19 FEBRUARY 2010**



# ENTRY FORM FOR 2020 *VISION*

*ENTRIES ARE TO BE SUBMITTED THROUGH YOUR SCHOOL OR COLLEGE*

**PROJECT TITLE:** \_\_\_\_\_

\_\_\_\_\_

pensions archive \_\_\_\_\_

## **ENTRANTS NAME/S:**

1. \_\_\_\_\_

2. \_\_\_\_\_

3. \_\_\_\_\_

4. \_\_\_\_\_

**NAME OF TEACHER:** \_\_\_\_\_

**SCHOOL:** \_\_\_\_\_

**ADDRESS:** \_\_\_\_\_

\_\_\_\_\_

\_\_\_\_\_ **POST CODE:** \_\_\_\_\_

**TEL:** \_\_\_\_\_ **EMAIL:** \_\_\_\_\_

## **CONTACT NAME / DETAILS FOR QUERIES IF DIFFERENT FROM ABOVE:**

**NAME:** \_\_\_\_\_

**TEL:** \_\_\_\_\_ **EMAIL:** \_\_\_\_\_

**THE SUBMITTED ENTRY IS THE ORIGINAL WORK OF THE STUDENT/S LISTED ABOVE**

**SIGNED :** \_\_\_\_\_ **DATE:** \_\_\_\_\_

**POSITION IN SCHOOL:** \_\_\_\_\_

